

MIND THE GAP

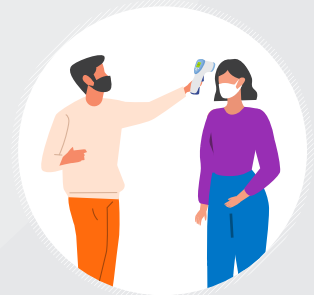
Safe Management Measures at Retail Establishments and Lifestyle-Related Services



All malls and large standalone stores >930 sqm of Gross Floor Area (GFA) can only allow 1 person per 10 sqm of GFA



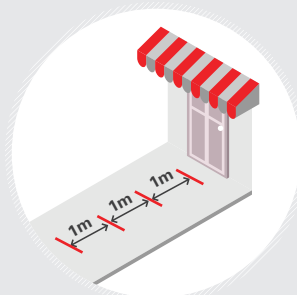
All malls, standalone stores, supermarkets, beauty services outlets, and other large retail stores >930 sqm of GFA must implement SafeEntry for contact tracing



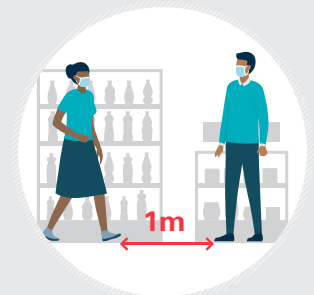
All malls, standalone stores, supermarkets and beauty services outlets must conduct temperature screening and check for visible symptoms



Customers, staff and delivery personnel to wear masks at all times



Demarcate queue lines clearly



Ensure at least 1m spacing between customers at all times



Remove product samples and testers



Disinfect common areas and clean high touch items frequently



For more information, visit

enterprisesg.gov.sg/covid-19/safe-distance



Updated: 4 August 2020

Enterprise
Singapore