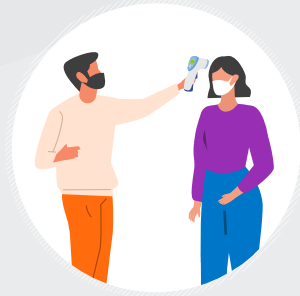


# MIND THE GAP

## Safe Distancing Measures for Consumers at Retail Establishments



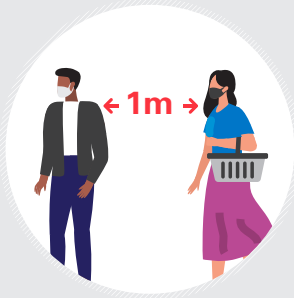
**Wear mask at all times**



**Allow staff to take your temperature**



**Scan QR code or allow staff to scan your ID for contact tracing**



**Keep at least 1m away from other people**



**Make online purchases and have it delivered whenever possible**



**Avoid crowded places. Shop during off-peak hours**



**Do shopping alone, if you can**



For more information, visit

[enterprisesg.gov.sg/covid-19/safe-distance](https://enterprisesg.gov.sg/covid-19/safe-distance)



Updated: 4 August 2020

**Enterprise  
Singapore**