

## Joint Factsheet

---

Date of Issue: 25 November 2020

### LAUNCH OF LAND TRANSPORT INDUSTRY DIGITAL PLAN FOR CHARTERED BUS SERVICES

#### Background

1. An efficient and reliable land transport network is an important enabler for our economy. Public transport forms the backbone of Singapore's land transport system, and the private transportation industry (e.g. chartered bus services, private-hire operators, ride-hailing operators, etc.) plays a vital role in complementing Singapore's public rail and bus services.
2. A key segment of the private transport industry, chartered bus services, which are typically run by SMEs, have been striving to digitalise and adopt innovative technology that can improve their business operations by addressing significant challenges they face.
3. To spearhead the sector's digitalisation journey, the Land Transport Authority (LTA) and Enterprise Singapore (ESG) jointly developed the Land Transport Industry Digital Plan - Chartered Bus Services (LTIDP-CBS), in partnership with the Infocomm Media Development Authority (IMDA), SkillsFuture Singapore (SSG) and the industry. The LTIDP-CBS is aligned to the Land Transport Industry Transformation Map (ITM), launched in February 2018, which strives toward a strong, diverse and vibrant land transport ecosystem.

4. The LTIDP-CBS is also part of the 'SMEs Go Digital' programme<sup>1</sup> that aims to make going digital simple for SMEs.

### **Land Transport Industry Digital Plan for Chartered Bus Services**

5. The chartered bus services sector currently comprises 10,600 buses owned by 3,500 different individuals and companies. Chartered bus operators are typically small fleet owners with less than five vehicles, as well as one-man operators who multi-task by taking on different duties including driving, managing operations, administration and finance concurrently.
6. The LTIDP-CBS will address challenges faced by this sector, such as operational difficulties due to a legacy of manual and time-consuming processes; manpower challenges brought on by an aging workforce; as well as business disruptions due to a lack of innovation. Going digital will therefore help SMEs transform their business operations, increase productivity and improve efficiency for better service standards.

---

<sup>1</sup> [www.imda.gov.sg/SMEsGoDigital](http://www.imda.gov.sg/SMEsGoDigital)

**IMDA** INFOCOMM MEDIA DEVELOPMENT AUTHORITY | **SMEs GO DIGITAL**

# 3 STEPS TO GO DIGITAL

**1** | **Is your business digital-ready?**  
Find out using the Industry Digital Plan (IDP) for your sector.

**2** | **How do you get started?**  
Take up pre-approved solutions with grant support.

**3** | **Where can you get help?**  
Contact your nearest SME Centre for support.

**For more information**  
Scan the QR code or visit [www.imda.gov.sg/SMEsGoDigital](http://www.imda.gov.sg/SMEsGoDigital)

**Support available**

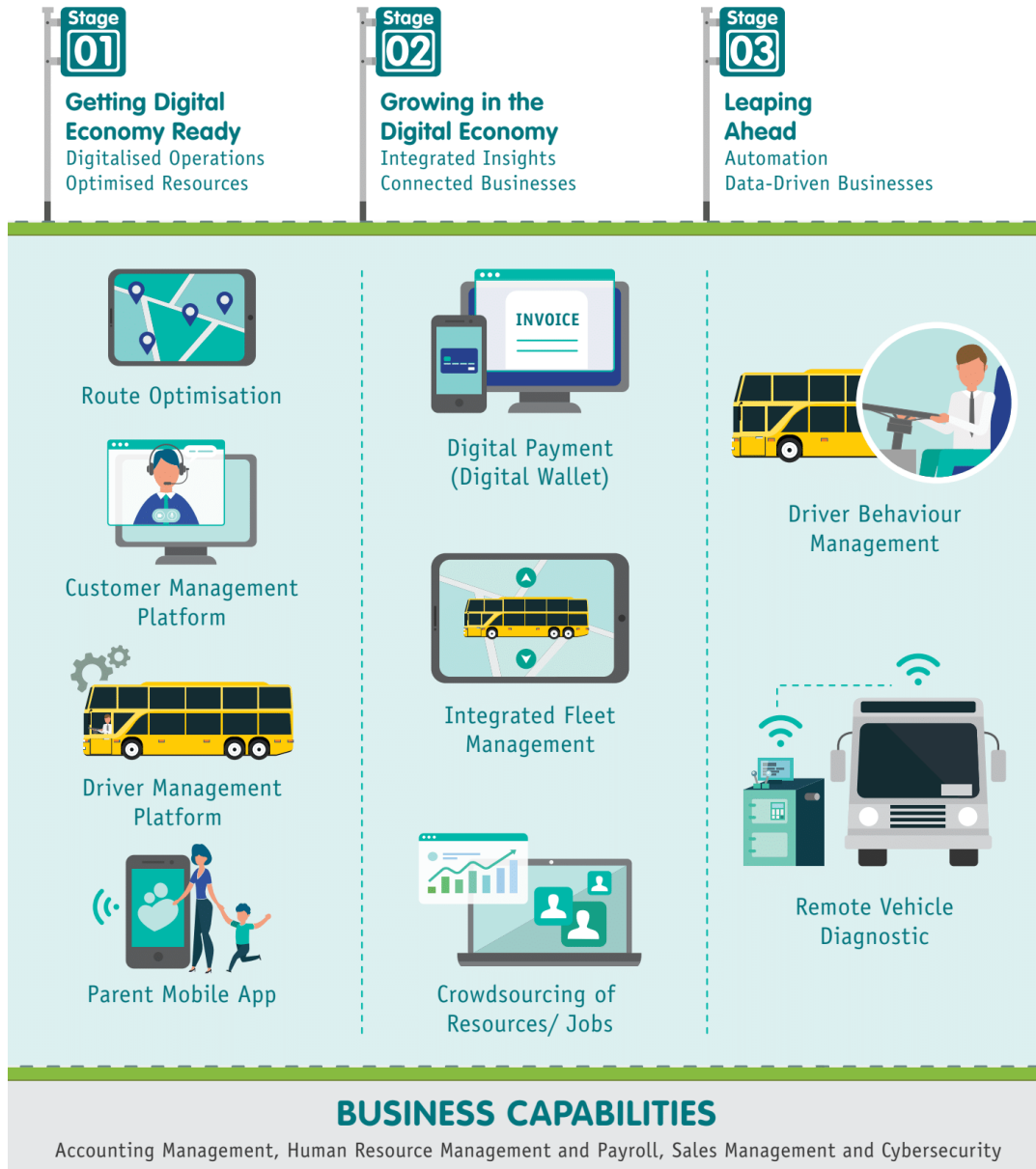
- Pre-Approved Solutions
- Start Digital Pack
- Grow Digital
- Consultancy Services (SME Digital Tech Hub)
- Government Grants (e.g. Productivity Solutions Grant (PSG); SkillsFuture Enterprise Credit (SFEC))
- Digital Resilience Bonus
- Digital Project Management Services

7. The LTIDP-CBS provides chartered bus service providers with a step-by-step guide on the digital solutions that the SMEs in this sector can adopt, as well as recommend suitable training for employees, at each stage of their business growth.
8. These digital solutions will be pre-approved by IMDA based on various SME-friendly parameters, such as its price points. Eligible SMEs may apply for funding support from the Productivity Solutions Grant (PSG) for adopting the pre-approved digital solutions.
9. The digital roadmap will be progressively updated to reflect the advent of new digital tools and technologies to allow the sector to keep pace with such developments.



## Digital Roadmap

This digital roadmap, developed by LTA, ESG and IMDA, in collaboration with Singapore School & Private Hire Bus Owners' Association (SSPHBOA), serves as a guide for you on your digitalisation journey.



Note: The roadmap will be progressively updated to reflect the advent of new digital tools and technologies for the industry.

7

10. The three stages of the digital roadmap in the LTIDP-CBS are:

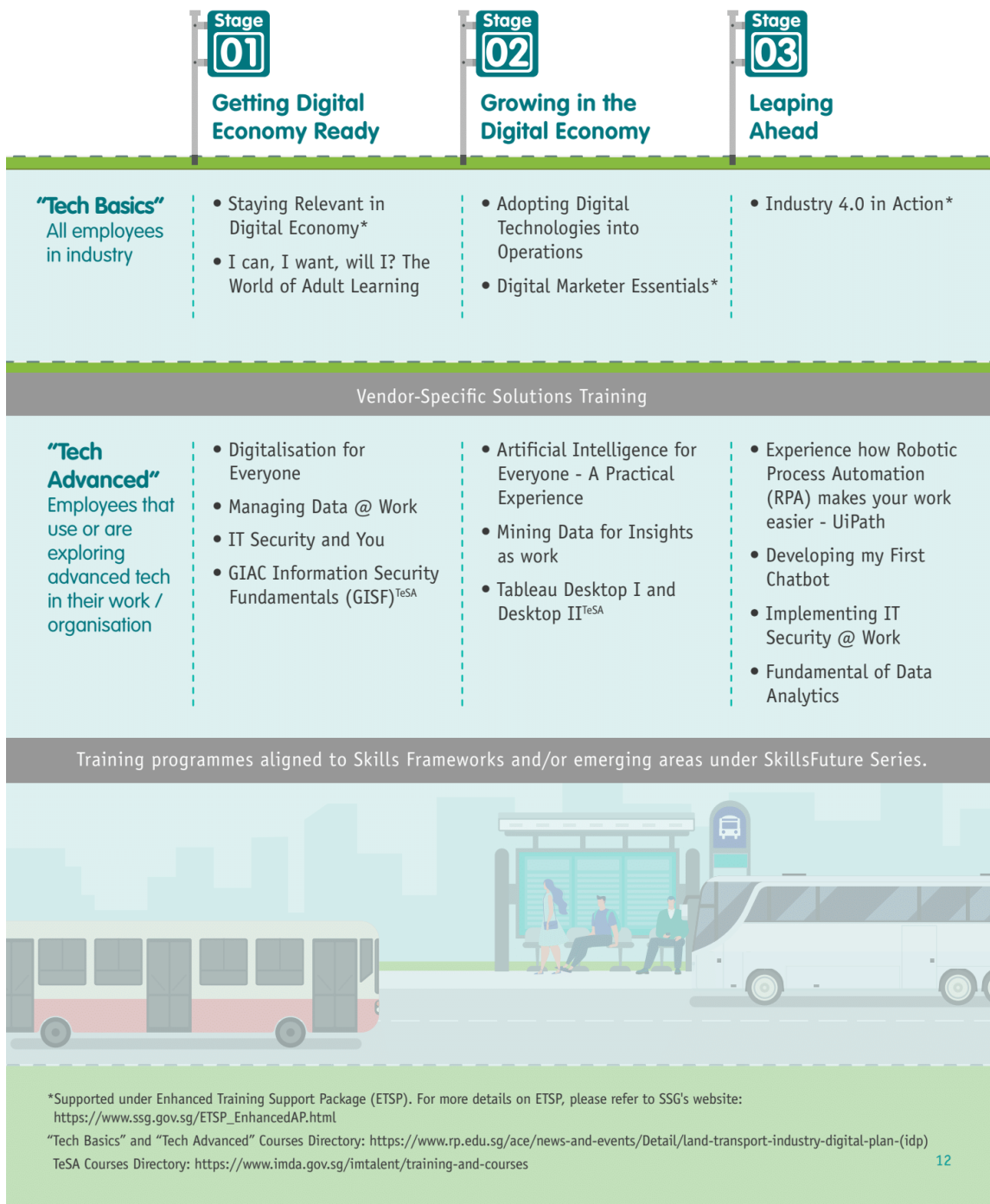
- **Stage 1: Getting Digital Economy Ready.** The initial stage aims to help SMEs get ready for the digital economy with basic digital solutions that enable SMEs

to kick-start their digital journey by streamlining the operations and optimise resources to improve productivity and customer satisfaction.

- **Stage 2: Growing in the Digital Economy.** The second stage highlights digital solutions that enable SMEs to participate in integrated ecosystems to maximise resources and open access to new local markets, thereby increasing revenue opportunities.
- **Stage 3: Leaping Ahead.** The third stage identifies advanced digital technologies that SMEs can adopt to maximise their business potential.

11. The LTIDP-CBS also includes a Digital Roadmap on Training to ensure that the industry’s workforce is adequately equipped with the necessary skills to adopt digital solutions, and ready for changes that come with digital transformation.

## Digital Roadmap on Training



12. SMEs can also use the online self-assessment checklist to assess their digital readiness and identify opportunities to go digital based on their current business operations, level of digitalisation and business expansion plans. For more information on the LTIDP-CBS, visit: [www.go.gov.sg/imda-landtransport-idp](http://www.go.gov.sg/imda-landtransport-idp)

### **Cloud-based Smart Fleet Management System by SSPHBOA**

13. One of the customised sectoral solutions that is now in pilot stage is the cloud-based integrated smart fleet management system developed by the Singapore School and Private Hire Bus Owners' Association (SSPHBOA), with support from ESG.
14. Referring to the common problems faced by industry, which is largely made up of one-man-operators (OMOs) with an average age of 50-60 years, Mr Phillip Peh, President, SSPHBOA shared that fear and set behaviours are the biggest challenges that operators face in getting their drivers to adopt technology. He added that modules in the new system, such as route optimisation, job scheduling, digital payment and inward facing in-vehicle recording device management are therefore designed to minimise the need for drastic behavioural changes. The solutions aim to cultivate safe driving habits while automating many of the current manual processes.
15. Chartered bus service providers that are keen to participate in the pilot can contact SSPHBOA at [ssphboa@singnet.com.sg](mailto:ssphboa@singnet.com.sg) or call 6741 0788. Eligible SMEs will receive subsidies to implement the digital solutions which include hardware and software training.

-End-

For enquiries, please contact: Land Transport Authority

Melissa Anne Manuel

Manager, Strategic Comms & Media Relations

Corporate Communications

Email : [media@lta.gov.sg](mailto:media@lta.gov.sg)

Enterprise Singapore

Fazilah Latif

Corporate Communications

Email : [Fazilah\\_latif@enterprisesg.gov.sg](mailto:Fazilah_latif@enterprisesg.gov.sg)

IMDA

Jacqueline Cai (Ms)

Assistant Manager, Communications and Marketing

Email : [Jacqueline\\_cai@imda.gov.sg](mailto:Jacqueline_cai@imda.gov.sg)

IMDA

Chloe Choong (Ms)

Assistant Director, Communications and Marketing

Email : [Chloe\\_Choong@imda.gov.sg](mailto:Chloe_Choong@imda.gov.sg)



## Annex

### SMEs Go Digital

The sector-specific IDPs are central to the SMEs Go Digital programme. The programme comprises the following:

- **Pre-Approved Solutions**

To make it easy for SMEs to adopt digital solutions recommended in the Land Transport IDP for Chartered Bus Services under the Business Capabilities category, IMDA provides a list of pre-approved solutions assessed to be market-proven, cost-effective and supported by reliable vendors. SMEs can visit GoBusiness Gov Assist (<https://govassist.gobusiness.gov.sg/productivity-solutions-grant/>) for the contact information of the pre-approved solution providers.

If funding support is required, SMEs can apply for the Productivity Solutions Grant (PSG) on the Business Grants portal, before purchasing and implementing digital solutions.

- **Consultancy Services**

For a more comprehensive review of their business, SMEs can approach Business Advisors at their nearest **SME Centre**<sup>2</sup> for business diagnosis and advisory on digital solutions relevant to their operations. SMEs that require specialist consultancy on sophisticated technologies, such as data analytics and cybersecurity, will be referred to the Principal Consultants at the **SME Digital Tech Hub**<sup>3</sup>. These digital consultancy services are provided at no cost to SMEs.

---

<sup>2</sup> List of SME Centres can be found [here](#)

<sup>3</sup> For more information, visit: [www.digitaltechhub.sg](http://www.digitaltechhub.sg)

- **Digital Project Management Services**

SMEs can consider engaging **Digital Project Management Services**<sup>4</sup> to support them in the implementation of digital solutions. The project managers can help with business process re-engineering and job redesign to get the maximum benefits and have more sustainable outcomes from going digital.

- **Start Digital**

For SMEs that are just starting their business or are new to digital technology, they can take up a **Start Digital Pack**<sup>5</sup> to begin their business right with foundational and competitively priced digital solutions. New SMEs can take up any two solutions free for at least six months with a minimum 18-month contract period from five categories: Accounting, Human Resources Management & Payroll, Digital Marketing, Digital Transactions and Cybersecurity. The solutions are pre-approved by IMDA and offered by Start Digital Partners like DBS, M1, Maybank, OCBC, Singtel and UOB.

- **Grow Digital**

For SMEs that are ready to seize business opportunities in overseas markets, they can tap on Grow Digital to get a head start in going global. It connects SMEs to Business-to-Business (B2B) and Business-to-Consumer (B2C) e-commerce platforms pre-approved by IMDA that have regional or global reach, and strong networks with complementary business service providers (e.g. logistics and financing), good track record and operating experience in multiple markets.

---

<sup>4</sup> Digital Project Management Services can be accessed [here](#)

<sup>5</sup> [www.imda.gov.sg/StartDigital](http://www.imda.gov.sg/StartDigital)