

MIND THE GAP

Safe Management Measures at F&B Establishments for Larger Dine-in Groups (Effective from 19 July 2021)

Dining groups of up to 5 persons are allowed if:

1 All diners

✓ **are fully vaccinated**

(i.e. 2 weeks have passed after receiving two doses of the Pfizer-BioNTech/Comirnaty or Moderna vaccine)

or

✓ **have valid negative COVID-19 test results**

[Antigen Rapid Test (ART) or Polymerase Chain Reaction (PCR) from an MOH-approved COVID-19 test provider within the last 24 hours]

or

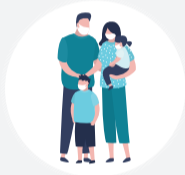
✓ **have recovered from a COVID-19 infection**

with a valid Pre-Event Testing (PET) exemption notice for the duration of his/her dining-in



2 Children aged 12 or below (i.e. born in or after 2009) only form up to half the number of diners (whereby all other diners must meet the first criteria)

or up to four children if all are from the same household and accompanied by an individual who meets the first criteria



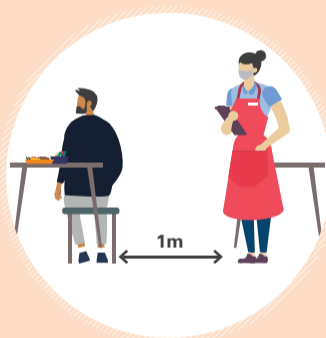
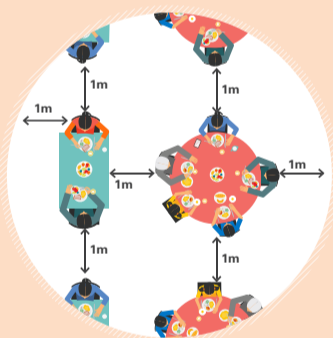
If diners are from different households

Group size	Maximum number of children aged 12 or below allowed per group
2 persons	2 children
3 persons	1 child
4 persons	2 children
5 persons	2 children

If diners are from the same households

Group size	Maximum number of children aged 12 or below allowed per group
3 - 5 persons	4 children, who must be accompanied by at least one eligible individual from the same household

To offer larger dine-in groups of up to 5 persons, F&B establishments have to:



1 Clearly identify or differentiate seating for larger dine-in groups (with table standees, colour-coded tablecloths or physical markings/barriers)

2 Appoint designated employee to conduct relevant checks for allowing larger dine-in groups

3 Conduct checks



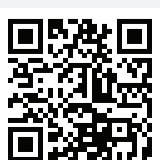
≥ 13 years old

- **Verify vaccination status** through the SafeEntry (Business) app or via customers' TraceTogether/HealthHub app or vaccination report/hardcopy card
- **Verify valid negative COVID-19 ART or PCR** via HealthHub app or result slips from MOH-approved COVID-19 test providers
- **Verify PET exemption notice**

≤ 12 years old

- **Verify age through ID** for children ≥ 7 years old (establishments may exercise discretion)

Government agencies will step up enforcement on F&B establishments and take firm action against any breaches.



For more information, visit

enterprisesg.gov.sg/covid-19/safe-distance



Enterprise
Singapore